



Mitch Williams
509.962.8558
www.mfwilliams.net



CHARL LADD

category Special Exhibit

MF Williams Construction Co., Inc. ◀

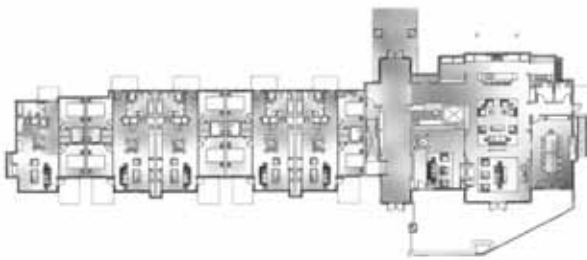
MF Williams Construction’s team of professionals understands the trust placed in us when building your dream home or commercial project. From your concept to our execution, we do our utmost to deliver a quality product which reflects your individual personality. Our dedication to quality and customer service generates a smooth building experience and a home for generations to come. Our team will listen to your ideas and take note of what is important to you as we move through the construction process.

MF Williams Construction is an established builder with over 30 years experience. We have been commended as the Kittitas Valley Tour of Homes “People’s Choice Award” recipient for six of the last eight years and have been featured in various home magazines. Mitch Williams is an active member of the Central Washington Home Builders Association, and the Building Industry Association of Washington where he serves on the Board of Directors.

The rustic, richly-appointed facilities of The Lodge at Canyon River Ranch provides owners with a uniquely Northwest experience. This luxurious facility serves as the central hub of the resort and provides spectacular views of the canyon from its central great room with massive stone fireplace. The library is a welcoming space to retreat for a glass of scotch, fine wine, or to curl up with a good book. A game room, fully stocked with cards and board games, is there for family nights indoors. There is also a spacious dining room for family or holiday dinners, as is a board room for meetings or company retreats.

The Lodge Suites are luxurious two-bedroom furnished suites, complete with fully-appointed private kitchens, decorated in a classic, rustic yet luxurious Northwest décor. Designed for seasonal use, ownership of the Lodge Suites will be offered in partial interests, or “fractional” ownership increments. For pricing and availability, contact Mr. Scott Pearl of Windermere OnSite at (206) 234-9779 or scott@canyonriverranch.net

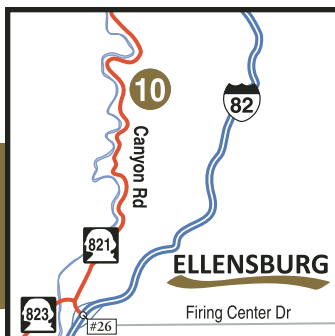
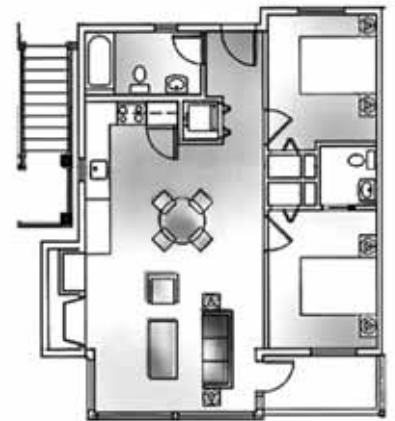
▶ Main Level



▶ 1st Floor Suite



▶ 2nd Floor Suite



DIRECTIONS: Take Interstate Highway 82 west toward Ellensburg. Take exit #26 and turn left on State Highway 821. The Lodge is located near the canyons half way point at 14694 State Highway 821.