

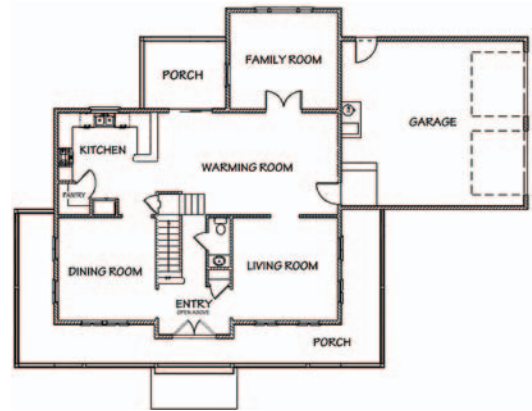
**522 5th Street, Zillah, WA**

This custom-built, 2-story home features “old world” charm with all the modern conveniences. One is greeted by the covered, wrap-around porch that includes stone and wood columns, a no-maintenance rail system, and a unique water drip-system for the hanging flower baskets.

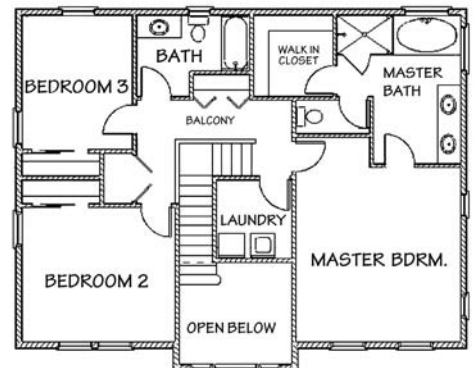
The interior two-story foyer is flanked by two double French doors leading to the separate formal living and dining rooms. The living room features two built-in bookcases and the dining room offers a custom storage cabinet for wine and accessories.

The family kitchen, which is enhanced by distressed maple cabinets, creamy-white granite countertops and tile flooring, flows into the open warming room and separate family room.

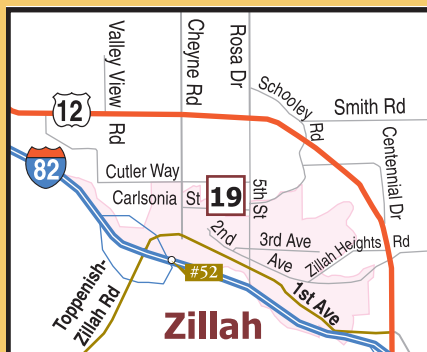
The second floor accommodates two bedrooms; a full bathroom; laundry room; and a separate master suite that includes a custom walk-in closet, large corner Jacuzzi tub, tiled walk-in double shower, and a separate water closet.



**Main Floor**



**Upper Floor**



**Directions:** From Yakima, follow Interstate 82 East and take Exit 52 to Zillah. Turn left on Toppenish Zillah Rd. Follow Toppenish Zillah Rd. to the top of the hill and turn left on Cheyne Rd. Drive ¼ mile on Cheyne Rd. and turn right on Carlsonia St. The home is located at 522 5th St (the corner of Carlsonia St. and 5th St).



**Jim & Harv Koerner**  
**509-945-3483**

J.D.K. Construction



J.D.K. Construction is a partner in the Pacific Power ENERGY STAR® New Homes program.